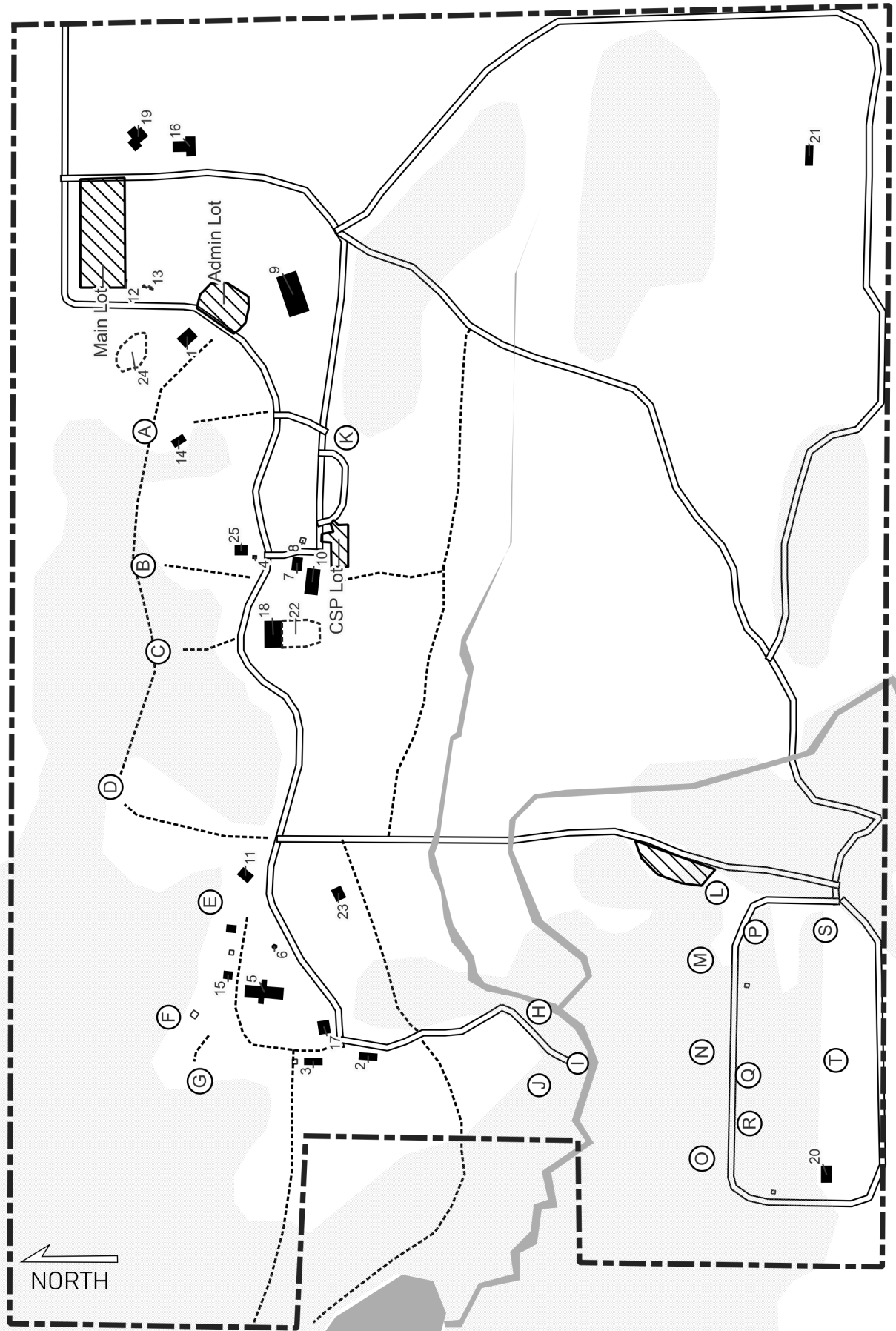




# CAMP CATALOG

2024-2025 SEASON

# GAMEHAVEN SCOUT CAMP



# GAMEHAVEN SCOUT CAMP

## FAMILY CAMPSITES

*All family campsites have a nearby pit toilet and well.*

- A) Hawk Point
- B) Hidden Well
- C) The Swamp
- D) Deer Crossing
- E) Turkey Ridge
- F) Badger Hollow
- G) Hok-Si-La
- H) Scenic Overlook
- I) Oakview
- J) Stormy Hill

## MODERN CAMPSITES

*All modern campsites have in-site electricity, a nearby pit toilet, and a well.*

- K) Staff City

## RUSTIC CAMPSITES

*All rustic campsites are within 1/4 mile of a pit toilet and well.*

- L) Eagle's Nest
- M) Wolf Trap
- N) Cripple Creek
- O) Fox Run
- P) Beaver Portage
- Q) Crow Wing
- R) White Oak
- S) Queen's Bluff
- T) Squirrel Hunter

## BUILDINGS

*Not all latrines are marked—campsites A, B, D-F and H-J have latrines in-site.*

- 1) Administration Building (AED)
- 2) Archery Range
- 3) BB Gun Range
- 4) "Bus Stop" / Assembly Field
- 5) Castle Play Area
- 6) Cleaning Shack
- 7) Commissary (AED)
- 8) Commissary Latrine
- 9) Community Building
- 10) "Cub Scout" Pavilion
- 11) Deer Lodge
- 12) Gateway
- 13) Gateway Bridge
- 14) Hawk Point Bunker
- 15) Jerry's Barn
- 16) Maintenance Shop
- 17) Pheasant Lodge
- 18) Pool House
- 19) Ranger's House
- 20) "Scout" Pavilion
- 21) Shotgun 5-Stand
- 22) Swimming Pool
- 23) Tin Shed
- 24) Tindeuchen Fire Bowl
- 25) Tradin' Post

# CAMP AT GAMEHAVEN



Thank you for choosing Gamehaven Scout Camp to be the location of your next adventure! Whether you are coming as a field trip, individual camping, camping with a Scout unit, or attending one of our wonderful programs, we're happy to have you here with us!

Gamehaven Scout Camp held its first program in Summer of 1995, with a "Knights of Yore" theme. Since then, we have expanded to include activities in all seasons, group rentals and programs, and we're still expanding today.

Questions or want to learn more? Go to [gamehavenbsa.org/camp](https://gamehavenbsa.org/camp), or call me at (507) 361-5345.

See you "out there"!

Brady Geary

2024 Gamehaven Scout Camp Director

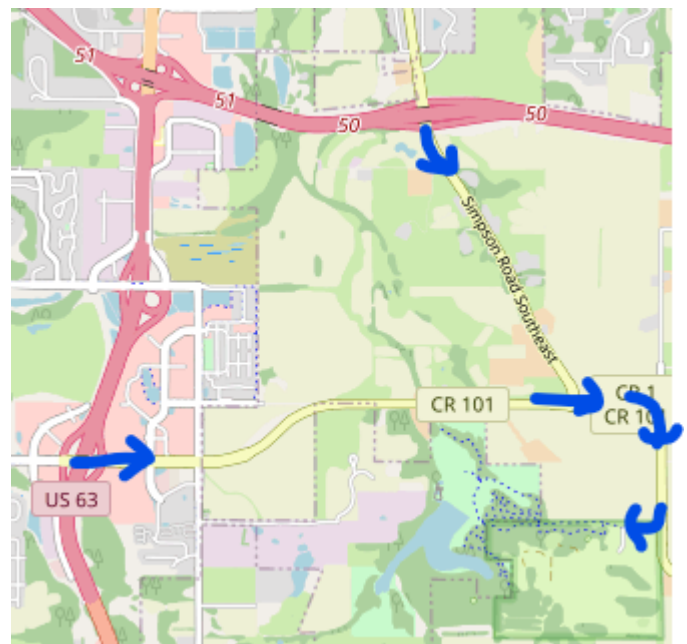
## GETTING TO CAMP

Gamehaven Scout Camp is located at  
**5015 Simpson Rd. SE, Rochester MN 55904**

You can get here from MN-52 or from MN-63.

**From 52:** Exit on 11th ave / CR-1 and head southeast. Take the second (left) exit at the roundabout, and find the camp to your right after about 1/2 mile.

**From 63:** Exit on 48th st / CR-20 and head east past the lights. Continue 1 mile, then take the first (straight) exit at the roundabout, and find the camp to your right after about 1/2 mile.





# TABLE OF CONTENTS

1	Camp Map
2	Camp Map—Legend
3	Intro from Camp Director
3	Directions to Camp
4	Table of Contents
5	Programs
5	Spring Events
6	Summer Events
7	Fall Events
8	Winter Events
10	Program Registration
10	Program Cost Table
11	Rentals
11	Lodging
13	Program Areas
15	Equipment
17	Rental Registration
17	Rental Cost Table
18	Volunteering at Camp
18	Contact Us!



# PROGRAMS | SUMMER

## Summer Cub Adventures



2024 | June 7-9, July 12-14, August 9-11

2025 | June 6-8, July 11-13, August 8-10

Weekend Summer Camps are here! Enjoy those classic summer camp activities like swimming, ranges, hikes, crafts, and more. Cubs in attendance will work on outdoor belt loops. Attendees receive a T-Shirt and Patch! Early Bird pricing ends 4/18/25

	Saturday Only	Weekend
Member Youth	\$40 / \$50	\$65 / \$85
Non-Member Youth	\$60 / \$70	\$85 / \$105
Adult	\$15	\$25

2024 | July 21-27

2025 | July 20-25

National Youth Leadership Training (NYLT) prepares young people to become better leaders and improve their communication and team-building skills under the guidance of experienced youth and adult staff. All youth must be First Class scouts by Day 1.

	WEEK
Scouts BSA Youth	\$250 (\$42/day)

[gamehavenbsa.org/resources/for-scouts/national-youth-leadership-training](https://gamehavenbsa.org/resources/for-scouts/national-youth-leadership-training)

## NYLT





# PROGRAMS | FALL

## Fall Family Adventure



10/12/2024 | 10/11/2025

Our Fall Family Adventure is free to all Cub Scouts, and a great first campout or activity for new Cubs who joined at the start of the school year!

Join the Guardians of Gamehaven as they embark on a heroic adventure to recover the Oath Stones from Johannos. During the day, scouts will train as a guardian, search for the oath stones, and defeat the evil Johannos. If you decide to spend the night, your heroic adventure continues in part 2, Guardians of Gamehaven - "Johannos's Lives".

	Saturday Only	Day + Overnight
Member Youth	FREE	\$15
Non-Member Youth	\$25	\$40
Adult	\$15	\$25

2024 | September 27-29

2025 | September 26-28

Join us at Fall Camporee for a weekend of camping, fun, and games. Compete in inter-troop competitions and connect with your fellow Scouts across all of Gamehaven Council.

	Weekend
Member Youth	FREE
Member Webelos / Arrow-of-Light	\$15 (Day only)
Adult Leader	\$15

## FALL CAMPOREE



# PROGRAMS | WINTER (1/2)

## Operation Icicle B.S.A.



"Scoutbusters" | January 10-12, 2025

There is something strange in the neighborhood! Welcome to Gamehaven Scout Camp, the center of all paranormal activity in the state of Minnesota, as a guest you will dine well, meet new friends, and become part of an elite ghost busting squad! Daily activities will include: Ghost 101, Proton Pack Engineering, Echo 101 Repair Shop, and How to Roast a Marshmallow Class. Attendees receive a Operation Icicle Sweatshirt, patch, and a chance to complete a merit badge during the event!

	Weekend
Scouts BSA Youth	\$150

January 24-26, 2025

Our traditional Winter Klondike Camporee includes klondike sled racing, snow snake creating, and fun unit camping in the winter!

	Weekend
Member Youth	FREE
Member Webelos / Arrow-of-Light	\$15 (Day only)
Adult Leader	\$15

## Winter Camporee



## Ice Fishing Tournament



February 1st, 2025

Try your hand at a classic Minnesota tradition—ice fishing! Our ice fishing experts will be on-hand to help teach you the skills.

Already an ice fishing master? Compete in our youth and adult tournaments.

Includes a hot lunch!

	Tournament
Member	\$10
Non-Member	\$15



# PROGRAMS | WINTER (2/2)

## Operation Icicle Cubs 1 (Weekend) & Polar Cubs 1 (Saturday)



### "Gary Pot-tear"

January 17-19, 2025

Gary Pot Tear the cousin of a famous wizard sets out on a magical adventure, join us at Gamehaven Scout Camp where magic, creatures, and a spelltastic adventure awaits you for a three-day trip through Hoghaven. During your trip you will quest for your wizard's wand, be sorted into a Hoghaven House, and compete for glory in the Ditchwitch Game. Weekend participants receive a sweatshirt, all participants receive a patch.

	Operation Icicle (Weekend)	Polar Cubs (Saturday-only)
Cub Scout Youth	\$75	FREE
Non-member youth		\$25
Adult	\$50	\$15

## "Scout Wars: Rogue Squadron" February 7-9, 2025

Join us in the land of Scout Wars, where the surviving pilots have to rebuild their squadron, after the defeat at Gavin by the Empire. Scouts will journey to Antilles to start their squadron training, build their own X-Wing, and defeat The Empire. Weekend participants receive a sweatshirt, all participants receive a patch.

	Operation Icicle (Weekend)	Polar Cubs (Saturday-only)
Cub Scout Youth	\$75	FREE
Non-member youth		\$25
Adult	\$50	\$15

## Operation Icicle Cubs 2 (Weekend) & Polar Cubs 2 (Saturday)





# PROGRAMS | SPRING

## Spring Family Adventure



“INTO THE SCOUTERVERSE” | April 11–12

Welcome to the Scouterverse, where you and Spider Guy take a time bending adventure through the ages in a quest to find you way home, save Spider Guy, and save the Scoutverse from the Shadowlord. If you decide to stay overnight, your adventure will continue in *“Spider Guy – The Revenge of Shadow”*.

	Saturday Only	Day + Overnight
Member Youth	\$25	\$40
Non-Member Youth	\$35	\$50
Adult	\$10	\$25

April 25-27, 2025

Spring Camporee is the perfect way to shake off that winter hibernation! Spring Camporee is our largest Scouts BSA camp of the year, and includes First-Class skills, older-youth activities, campsite awards, campfires, and more!

	Weekend
Member Youth	FREE
Member Webelos / Arrow-of-Light	\$15 (Day only)
Adult Leader	\$15

## Spring Camporee



# PROGRAMS | REGISTRATION

## EVENT REGISTRATION



[scoutingevent.com/299](https://scoutingevent.com/299)

## CAMP INFORMATION



[gamehavenbsa.org/camp](https://gamehavenbsa.org/camp)

	Member Youth	Non-Member Youth	Adult	Register by going to: <a href="https://scoutingevent.com/">https://scoutingevent.com/</a> _____
2024 Summer Cub Adventures (Weekend)	\$85	\$105	\$25	/299-summerfa24
(Day)	\$50	\$70	\$15	/299-summerfa24
2024 National Youth Leadership Training	\$250			/299-NYLT24
2024 Fall Family Adventure	\$0	\$25	\$15	/299-fallfa24
2024 Fall Camporee	\$0		\$10	/299-fallcamporee24
2025 Operation Icicle B.S.A.	\$150			/299-opicebsa25
2025 Operation Icicle Cubs (Weekend)	\$75		\$50	/299-wintercubs25
2025 Polar Cubs (Day)	\$0	\$25	\$15	/299-wintercubs25
2025 Ice Fishing Tournament	\$10	\$15	\$15	/299-icefishing25
2025 Winter Klondike Camporee	\$0		\$10	/299-klondike25
2025 Spring Family Adventure	\$25	\$35	\$10	/299-springfa25
2025 Spring Camporee	\$0		\$10	/299-springcamporee24
2025 Summer Cub Adventures (Weekend)	\$85	\$105	\$25	/299-summercubs25
(Day)	\$50	\$70	\$15	/299-summercubs25
2025 National Youth Leadership Training	\$250			/299-nylt25
2025 Fall Family Adventure	\$0	\$25	\$15	/299-fallfa25
2025 Fall Camporee	\$0		\$10	/299-fallcamporee25

# RENTALS | CAMPING & LODGES

---

## SPEND THE NIGHT AT GAMEHAVEN SCOUT CAMP

Whether this is your first time under the stars, or you're an experienced camper, Gamehaven has something for you and your group! All overnight reservations include a volunteer campmaster to help with check in, check-out, questions and building access, and in case of emergencies.

### Modern Campsites

Modern Campsites are equipped with several outlets to allow you to charge electronics, run air pumps, and other needs. They are located near a latrine and a well for drinking water.

### Family Campsites

Family Campsites are perfect for young children and new campers! Each family campsite is located near a latrine and a well for drinking water.

### Rustic Campsites

Rustic campsites do not have a well or toilet on-site, but are all located within 1/4 mile of one. These sites are perfect for hiking to, or enjoying "roughing it".

### Family Cabins

These cabins bunk four on two bunk beds, and have A/C in the summer and heat in the winter. Each cabin also has a desk and coat hangar. Pit toilets are located nearby.

### Deer Lodge

Deer Lodge is located in the middle of camp, between the swimming pool and the ranges. It has two levels, each of which can fit 15 people on provided mattresses.

### Pheasant Lodge

Pheasant Lodge is located on the west end of camp, next to the ranges and the sledding hill. It has two levels, each of which can fit 15 people on provided mattresses.

	MEMBERS	NON-PROFITS	NON-MEMBERS
Modern Campsite (per night)	\$0 / Night	\$45 / Night	\$50 / Night
Family Campsites (per night)	\$0 / Night	\$45 / Night	\$50 / Night
Rustic Campsites (per night)	\$0 / Night	\$45 / Night	\$50 / Night
Family Cabins (per night)	\$30 / Night	\$50 / Night	\$60 / Night
Deer Lodge (per night)	\$60 / Night	\$100 / Night	\$125 / Night
Pheasant Lodge (per night)	\$60 / Night	\$100 / Night	\$125 / Night



# RENTALS | CAMPING & LODGES

---



Pheasant Lodge



Deer Lodge



Hawk Point (Family Campsite Example)



Staff City (Modern Campsite Example)



Family Cabin—Exterior



Family Cabin—Interior

# RENTALS | PROGRAM AREAS

---

## THERE IS LOTS TO DO AT GAMEHAVEN!

There are so many things to do with a group here at Gamehaven Scout Camp! For equipment, go to page (?)

### Admin Building

The Administration Building conference room is great for board meetings and retreats. It seats 12 comfortably on padded chairs, and has an indoor bathroom and year-round running water.

### Ranges

Gamehaven has Archery and BB Gun ranges, with equipment for you to practice your aim! Contact us to learn more about supervision and training requirements to use these ranges.

### Cub Scout Pavilion

Our largest indoor seating space can comfortably seat 80 at picnic tables, or 150 on chairs. The building is open in the summer, and enclosed in the winter, with wood stoves providing heat.

For an extra fee, rent a grill OR rent our commercial-grade commissary kitchen to serve your guests! Contact us to learn more about supervision and training requirements to open the kitchen.

### Swimming Pool

Splash splash! The Gamehaven Swimming Pool is open from June 1st—August 31st every year. Contact us to learn more about supervision and training requirements to open the swimming pool.

### Shotgun Five-Stand

Test your aim at our 5-stand. This large open range is designed to help test trap shooting skills. Contact us to learn more about supervision and training requirements to open the shotgun stand.

### Tindeuchen Fire Bowl

“Tindeuchen” means Fire Maker in Lenni Lenape, and this is the place to make and host a wonderful camp-fire! Benches here seat 60, and there is water on-site for safety. Comes with access to plenty of firewood.

	MEMBERS	NON-PROFITS	NON-MEMBERS
Admin Building (4-hr blocks)	\$10	\$20	\$50
Ranges (4-hr blocks)	\$3.50/person	\$3.50/person	\$3.50/person
Cub Scout Pavilion / Dining Hall (3-hr blocks)	\$35	\$60	\$80
Pavilion + Grill rental (3-hr blocks)	\$85	\$120	\$140
Commissary (commercial kitchen) rental (3-hr blocks)	\$300	\$350	\$500
Swimming Pool (per hour block)	\$3/person	\$5/person	\$7/person
Shotgun 5-stand (AM / PM blocks)	<i>Call Office</i>	<i>Call Office</i>	<i>Call Office</i>
Tindeuchen Fire Bowl (4-hr blocks)	\$25	\$50	\$50



# RENTALS | PROGRAM AREAS



Admin Building—Conference Room



Archery Range



Cub Scout Pavilion



Swimming Pool



Shotgun 5-Stand



Tindeuchen Fire Bowl

# RENTALS | EQUIPMENT

---

## GEAR UP FOR ADVENTURE

Gamehaven Scout Camp has lots of equipment to rent for activities and campouts

### GPS Units (Geocaching)

This set of eight GPS units comes with instructions for use, and a beginner-friendly set of geocaches you can find at camp.

### Canoes and Kayaks

Whether its on the Gamehaven Reservoir, or taking the boats offsite, you'll love paddling in our canoes and kayaks! Contact us to learn more about renting a trailer if needed.

### Tubing Hill (Snow Tubes)

Enjoy the Minnesota winter at our tubing hill! Whether during the day or at night with built-in lighting, this is a great way to blow off steam or just enjoy a new snowfall. Helmets are not included, but must be worn while tubing. 3-hour sessions.

### Sound System with Microphone

Perfect for a large group in the Cub Scout Pavilion or at the Tindeuchen Fire Bowl, this sound system comes with one speaker, a basic soundboard, and a wired microphone with stand.

### Projector Screen

Presenting for a group or showing a movie? Check out one of our 10'x10' projector screens. These screens can be set up anywhere at camp. Projectors not included.

	MEMBERS	NON-PROFITS	NON-MEMBERS
GPS Units (per day)	\$15/day	\$15/day	\$25/day
Canoes and Kayaks (per day)	\$20/day	\$30/day	\$60/day
Pinewood Derby Track (per day)	\$20/day	\$30/day	\$60/day
LEGO® Derby Rental (additional cost)	+\$5	+\$10	+\$20
Tubing Hill and Tubes (3-hr block)	\$5/Person	\$6/Person	\$8/person
Sound System with Microphone (per day)	\$25/day	\$40/day	\$50/day
Projector Screen (per day)	No Charge	\$10/day	\$25/day



# RENTALS | EQUIPMENT

---



GPS Units



Canoe



LEGO® Derby Cars



Tubing Hill



Sound System



Projector Screen

# RENTALS | REGISTRATION

## CAMP RENTALS



[campreservation.com/299](http://campreservation.com/299)

## CAMP INFORMATION



[gamehavenbsa.org/camp](http://gamehavenbsa.org/camp)

	MEMBERS	NON-PROFITS	NON-MEMBERS
Modern Campsite (per night)	\$0 / Night	\$45 / Night	\$50 / Night
Family Campsites (per night)	\$0 / Night	\$45 / Night	\$50 / Night
Rustic Campsites (per night)	\$0 / Night	\$45 / Night	\$50 / Night
Family Cabins (per night)	\$30 / Night	\$50 / Night	\$60 / Night
Deer Lodge (per night)	\$60 / Night	\$100 / Night	\$125 / Night
Pheasant Lodge (per night)	\$60 / Night	\$100 / Night	\$125 / Night
Admin Building (4-hr blocks)	\$10	\$20	\$50
Ranges (4-hr blocks)	\$3.50/person	\$3.50/person	\$3.50/person
Cub Scout Pavilion / Dining Hall (3-hr blocks)	\$35	\$60	\$80
Pavilion + Grill rental (3-hr blocks)	\$85	\$120	\$140
Commissary (commercial kitchen) rental (3-hr blocks)	\$300	\$350	\$500
Swimming Pool (per hour block)	\$3/person	\$5/person	\$7/person
Shotgun 5-stand (AM / PM blocks)	<i>Call Office</i>	<i>Call Office</i>	<i>Call Office</i>
Tindeuchen Fire Bowl (4-hr blocks)	\$25	\$50	\$50
GPS Units (per day)	\$15/day	\$15/day	\$25/day
Canoes and Kayaks (per day)	\$20/day	\$30/day	\$60/day
Pinewood Derby Track (per day)	\$20/day	\$30/day	\$60/day
LEGO® Derby Rental (additional cost)	+\$5	+\$10	+\$20
Tubing Hill and Tubes (3-hr block)	\$5/Person	\$6/Person	\$8/person
Sound System with Microphone (per day)	\$25/day	\$40/day	\$50/day
Projector Screen (per day)	No Charge	\$10/day	\$25/day

# VOLUNTEER | CAMP SERVICE

---

It takes a village to run a successful Scout Camp! In addition to our professional staff, we are supported by many volunteer committees and work crews:

## Campmaster Corps

The Campmaster Corps is a group of registered Scouters who agree to spend time at camp while other groups are using it. They help check in groups, provide customer service, and ensure sites and facilities are returned to the way they were found.

## Maintenance Crew

The Thursday Maintenance Crew performs regular maintenance at camp every Thursday morning, including lawnmowing, cleaning, building repairs, and setting up for upcoming programs.

## Program Committee

The Program Committee meets monthly to plan out seasonal camp events. They are also responsible for finding staff and running those events.

## Project Spruce

The Project Spruce work crew meets monthly to perform service to camp, dedicated to “sprucing” up the facilities and camper experience. Past projects have included painting the swimming pool, renovating the Administration building, and replacing commissary windows.

## Properties Committee

The Properties Committee meets monthly to coordinate the Maintenance and Spruce crews, plan for major camp renovations, and discuss camp rules and regulations.

# CONTACT US

---

John DeStazio (Caretaker)

507.261.8307

[john.destazio@scouting.org](mailto:john.destazio@scouting.org)

Brady Geary (Camp Director)

507.361.5345

[brady.geary@scouting.org](mailto:brady.geary@scouting.org)

Gamehaven Council Office

607 E Center St

Rochester, MN 55904

507.287.1410





5015 Simpson Rd. SE  
Rochester, MN 55904

507.287.1410

[gamehavenbsa.org/camp](http://gamehavenbsa.org/camp)